



Rice Cooker
Model CE-CN-0005
Item 39454
Instruction Manual



Revised - 05/02/2023



Toll Free: 1-800-465-0234
Fax: 905-607-0234
Email: service@omcan.com
www.omcan.com



Table of Contents

Model CE-CN-0005

Section	Page
General Information -----	3 - 4
Safety and Warranty -----	4 - 5
Technical Specifications -----	6
Operation -----	6 - 7
Maintenance -----	7
Parts Breakdown -----	8 - 9
Electrical Schematics -----	10
Warranty Registration -----	11



General Information

Omcan Manufacturing and Distributing Company Inc., Food Machinery of America, Inc. dba Omcan and Omcan Inc. are not responsible for any harm or injury caused due to any person's improper or negligent use of this equipment. The product shall only be operated by someone over the age of 18, of sound mind, and not under the influence of any drugs or alcohol, who has been trained in the correct operation of this machine, and is wearing authorized, proper safety clothing. Any modification to the machine voids any warranty, and may cause harm to individuals using the machine or in the vicinity of the machine while in operation.

CHECK PACKAGE UPON ARRIVAL

Upon receipt of an Omcan shipment please inspect for external damage. If no damage is evident on the external packaging, open carton to ensure all ordered items are within the box, and there is no concealed damage to the machine. If the package has suffered rough handling, bumps or damage (visible or concealed), please note it on the bill of lading before accepting the delivery and contact Omcan within 24 hours, so we may initiate a claim with the carrier. A detailed report on the extent of the damage caused to the machine must be filled out within three days, from the delivery date shown in the shipping documents. Omcan has no recourse for damaged products that were shipped collect or third party.

Before operating any equipment, always read and familiarize yourself with all operation and safety instructions.

Omcan would like to thank you for purchasing this machine. It's of the utmost importance to save these instructions for future reference. Also save the original box and packaging for shipping the equipment if servicing or returning of the machine is required.

Omcan Fabrication et distribution Compagnie Limitée et Food Machinery d'Amérique, dba Omcan et Omcan Inc. ne sont pas responsables de tout dommage ou blessure causé du fait que toute personne ait utilisé cet équipement de façon irrégulière. Le produit ne doit être exploité que par quelqu'un de plus de 18 ans, sain d'esprit, et pas sous l'influence d'une drogue ou d'alcool, qui a été formé pour utiliser cette machine correctement, et est vêtu de vêtements de sécurité appropriés. Toute modification de la machine annule toute garantie, et peut causer un préjudice à des personnes utilisant la machine ou des personnes à proximité de la machine pendant son fonctionnement.

VÉRIFIEZ LE COLIS DÈS RÉCEPTION

Dès réception d'une expédition d'Omcan veuillez inspecter pour dommages externes. Si aucun dommage n'est visible sur l'emballage externe, ouvrez le carton afin de s'assurer que tous les éléments commandés sont dans la boîte, et il n'y a aucun dommage dissimulé à la machine. Si le colis n'a subi aucune mauvaises manipulations, de bosses ou de dommages (visible ou cachée), notez-le sur le bond de livraison avant d'accepter la livraison et contactez Omcan dans les 24 heures qui suivent, pour que nous puissions engager une réclamation auprès du transporteur. Un rapport détaillé sur l'étendue des dommages causés à la machine doit être rempli dans un délai de trois jours, à compter de la date de livraison indiquée dans les documents d'expédition. Omcan n'a aucun droit de recours pour les produits endommagés qui ont été expédiés ou cueilli par un tiers transporteur.

General Information

Avant d'utiliser n'importe quel équipement, toujours lire et vous familiariser avec toutes les opérations et les consignes de sécurité.

Omcan voudrais vous remercier d'avoir choisi cette machine. Il est primordial de conserver ces instructions pour une référence ultérieure. Également conservez la boîte originale et l'emballage pour l'expédition de l'équipement si l'entretien ou le retour de la machine est nécessaire.

Omcan Empresa De Fabricacion Y Distribucion Inc. Y Maquinaria De Alimentos De America, Inc. dba Omcan y Omcan Inc. no son responsables de ningun daño o perjuicio causado por cualquier persona inadecuada o el uso descuidado de este equipo. El producto solo podra ser operado por una persona mayor de 18 años, en su sano juicio y no bajo alguna influencia de droga o alcohol, y que este ha sido entrenado en el correcto funcionamiento de esta máquina, y ésta usando ropa apropiada y autorizada. Cualquier modificación a la máquina anula la garantía y puede causar daños a las personas usando la máquina mientras esta en el funcionamiento.

REVISE EL PAQUETE A SU LLEGADA

Tras la recepcion de un envio Omcan favor inspeccionar daños externos. Si no hay daños evidentes en el empaque exterior, Habra el carton para asegurarse que todos los articulos solicitados estén dentro de la caja y no encuentre daños ocultos en la máquina. Si el paquete ha sufrido un manejo de poco cuidado, golpes o daños (visible o oculto) por favor anote en la factura antes de aceptar la entrega y contacte Omcan dentro de las 24 horas, de modo que podamos iniciar una reclamación con la compañía. Un informe detallado sobre los daños causados a la máquina debe ser llenado en el plazo de tres días, desde la fecha de entrega que se muestra en los documentos de envío. Omcan no tiene ningun recurso por productos dañados que se enviaron a recoger por terceros.

Antes de utilizar cualquier equipo, siempre lea y familiarizarse con todas las instrucciones de funcionamiento y seguridad.

Omcan le gustaría darle las gracias por la compra de esta máquina. Es de la mayor importancia para salvar estas instrucciones para futuras consultas. Además, guarda la caja original y el embalaje para el envío del equipo si servicio técnico o devolución de la máquina que se requiere.

Safety and Warranty

IMPORTANT SAFEGUARDS

When using electrical appliances, basic safety precaution should always be followed, including the following:

1. Read all instruction carefully.
2. Before using the unit, check if the voltage indicated in this unit corresponds with the convenience outlet (110-120V.a.c.).
3. Do not use any appliance with a damaged cord or plug. If the cord is damaged it should be replaced with



Safety and Warranty

the same type and size or bring the unit to the nearest authorized service center.

4. In case of malfunctions, please bring the rice cooker to nearest customer service center.
5. The power cord must be closely plugged into the outlet. Do not plug into multi-sockets with other appliances.
6. The appliance is not intended for use by person (including children) with reduced physical, sensory or mental capabilities, or lack of experience and knowledge, unless they have been given supervision or instruction concerning use of the appliances by the person responsible for their safety.
7. Children should be supervised to ensure that they do not play with the appliances.
8. Keep curtains, furniture, flammable materials, etc. away from the rice cooker.
9. Do not place on or near gas stove or electric stove.
10. Use the rice cooker only with the supplied inner pot. Do not use the inner pot for other purpose.
11. Do not use the Inner pot on direct fire.
12. The steam vent is very hot while cooking; keep face and hands away from the steam vent.
13. Do not allow cord to touch hot surface of the rice cooker.
14. Do not loop the cord around the rice cooker after use.
15. Keep the rice cooker in a dry and cool place.
16. Save this instruction manual for future reference.

RESIDENTIAL USERS: Vendor assumes no liability for parts or labor coverage for component failure or other damages resulting from installation in non-commercial or residential applications. The right is reserved to deny shipment for residential usage; if this occurs, you will be notified as soon as possible.

1 YEAR PARTS AND LABOR BENCH WARRANTY

Within the warranty period, contact Omcan Inc. at 1-800-465-0234 to schedule a drop off to either an Omcan authorized service depot in the area, or to an Omcan Service warehouse to repair the equipment.

Unauthorized maintenance will void the warranty. Warranty covers electrical and part failures, not improper use.

Please see <https://omcan.com/disclaimer> for complete info.

WARNING:

The packaging components are classified as normal solid urban waste and can therefore be disposed of without difficulty.

In any case, for suitable recycling, we suggest disposing of the products separately (differentiated waste) according to the current norms.

DO NOT DISCARD ANY PACKAGING MATERIALS IN THE ENVIRONMENT!

Technical Specifications

Model	CE-CN-0005
Cooking Temperature	0 - 157°C / 32 - 314.6°F
Warming Temperature	71 - 75°C / 159.8 - 167°F
Power	1550 W
Electrical	110-120V / 60Hz / 1
Uncooked Rice Capacity	30 Cups
Cooked Rice Capacity	60 Cups
Weight	17.6 lbs. / 8 kgs.
Packaging Weight	20.9 lbs. / 9.5 kgs.
Dimensions	19.3" x 15" x 13.4" / 490 x 381 x 340mm
Packaging Dimensions	18" x 18" x 15" / 457 x 457 x 381mm
Item Number	39454

Operation

HOW TO USE

- Put the rice into the inner pot, measure the desired amount of rice using the measuring cup supplied with the unit.
 - Wash the rice several times until the water in the bowl is relatively clear.
 - Measure water on rice for cooking.
 - One cup of rice measure.
 - Use waterline inside the pot as cooking guide. The right line corresponds to liters of water, and the left line corresponds to cups of rice.
 - Never add water higher than the maximum waterline.
 - Wipe the bottom part of the inner pot, put the inner pot inside the unit, and turn it slightly from left to right to ensure that the pot is properly fitted into the heater plate, level the rice.
 - Do not heat the inner pot on top of the gas stove or electric stove, it will cause the pot to be deformed by the high temperature.
 - Never use a different inner pot than the type supplied.
 - Close the lid until it locks.
 - When ready to cook. Plug the unit into the convenience outlet (110-120Va.c.).
 - Press down the switch knob. The "cook" light will turn ON and rice will start to cook.
 - If the switch knob failed to push down, the "warm" light will turn ON, the rice will not be cooked.
 - When cooking is finished the switch knob will pop-up and a click sound will be heard, and the light will turn to "warm" position.
 - After the cooking cycle ends, keep the cover closed for about 15 minutes. The rice will be fluffier.
- The inner pot of this Rice Cooker has a non-stick coating to avoid scratches. Use only the spatula supplied

Operation

with this unit.

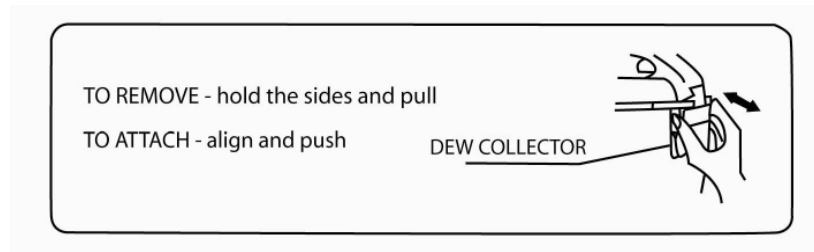
NOTE: DO NOT PUSH COOK BUTTON AFTER RICE HAS BEEN COOKED.

TIPS TO KEEP COOKED RICE WARM AND TASTY

1. Rice bran may give an unpleasant odor to cooked rice. To prevent this, thoroughly wash rice prior to cooking.
2. To prevent dry, discolored and unpleasant effect of the cooked rice, keep lid tightly closed.
3. Do not leave the rice spatula or anything inside the inner pot during keep warm cycle.

Maintenance

HOW TO REMOVE THE DEW COLLECTOR

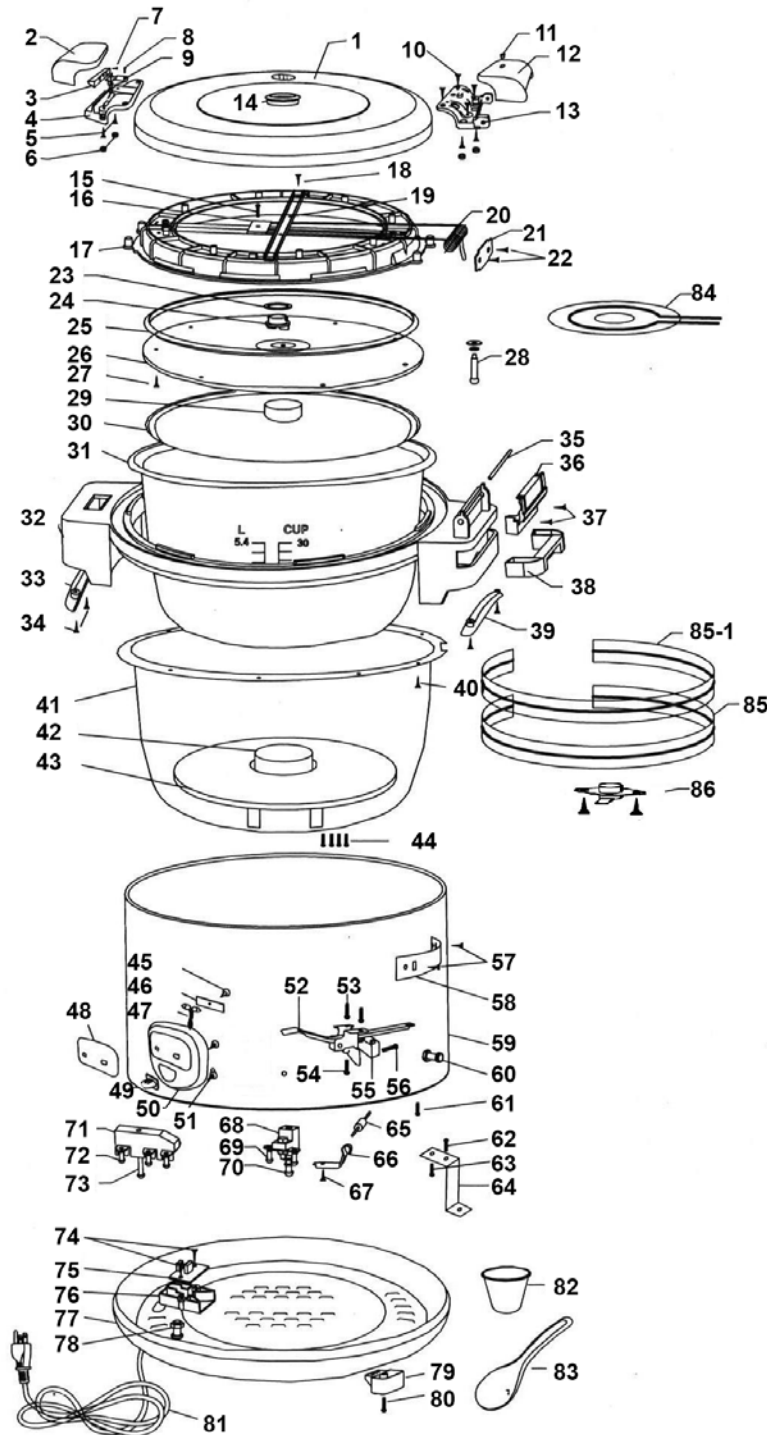


CLEANING AND MAINTENANCE

1. Always unplug the unit from the electrical outlet before cleaning.
2. Allow the unit to cool before cleaning. Never clean when the rice cooker is still hot.
3. Dew collector, inner lid, spatula, and inner pot are washable with soap and water.
4. Wipe the body with damp cloth.
5. Do not immerse the unit in water or in any other liquid.
6. Always keep the bottom part of the inner pot and the heater plate clean.
7. The inner pot of this unit is coated to avoid scratches. Do not use abrasive materials and use only the supplied spatula.

Parts Breakdown

Model CE-CN-0005 39454



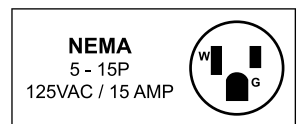
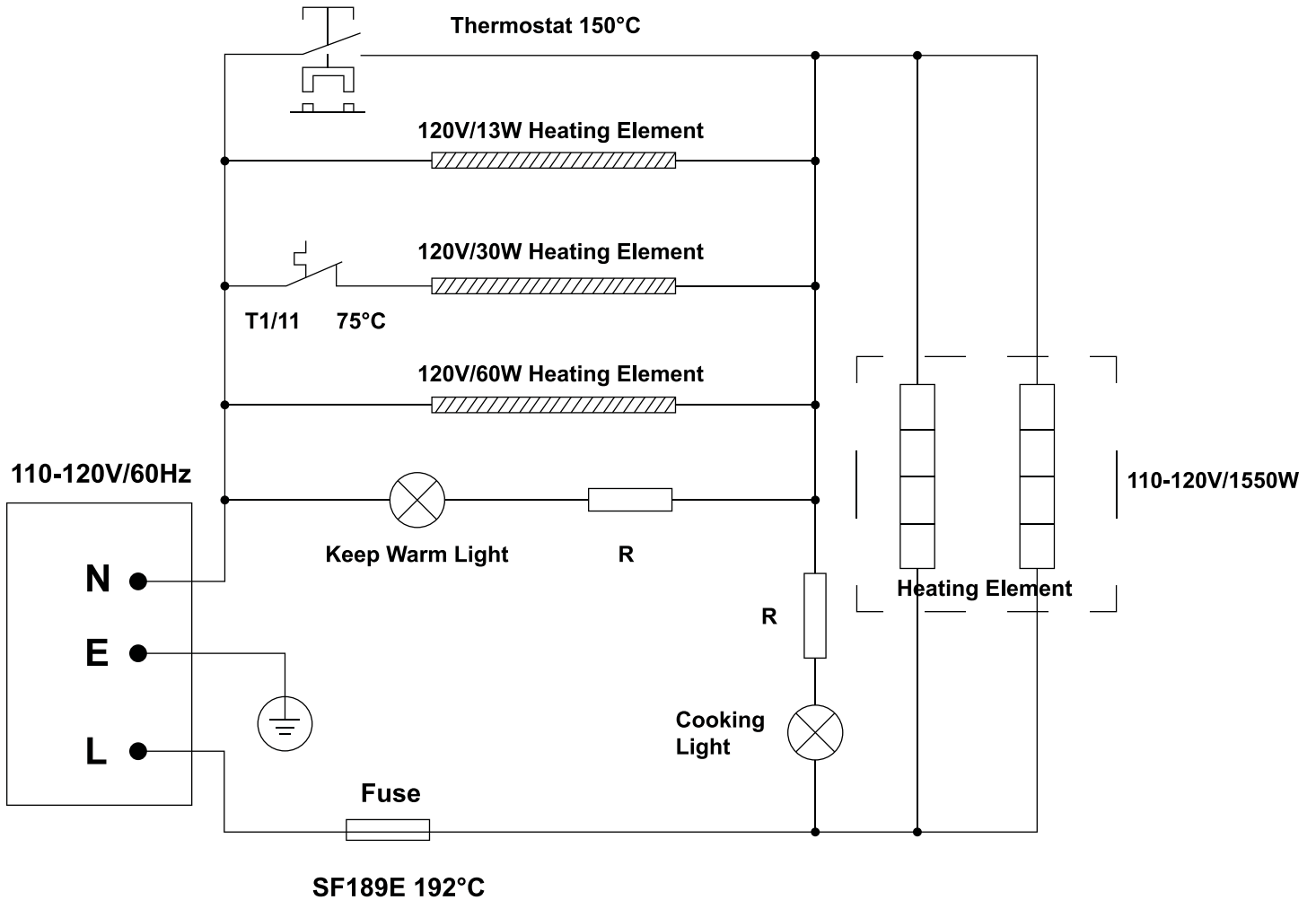
Parts Breakdown

Model CE-CN-0005 39454

Item No.	Description	Position	Item No.	Description	Position	Item No.	Description	Position
76181	Top Cover for 39454	1	76210	Aluminum Cover for 39454	30	64895	Outer Body for 39454	59
76182	Top Cover Left Outer Plastic Handle for 39454	2	40579	Inner Pot for 39454	31	64896	Screw M4x8mm / Washer Ø4.2mm / Nut M4mm for 39454	60
76183	Top Cover Button for 39454	3	76212	Middle Ring for 39454	32	64897	Screw M4x8mm for 39454	61-63, 67
76184	Top Cover Left Inside Plastic Handle for 39454	4	76213	Middle Ring Left Handle for 39454	33	64898	Middle Level Support Leg for 39454	64
76185	Screw for 39454	5	76214	Screw for 39454	34	64899	Thermo-Fuse NEC SF188RO for 39454	65
76186	Screw Shelter for 39454	6	76215	Middle Ring Dowelled Fixing for 39454	35	64900	Thermo-Fuse Fixer for 39454	66
76187	Screw for 39454	7	76216	Spring Bracket for 39454	36	76235	Ceramics Base for 39454	68
76188	Nut for 39454	8	76217	Screw for 39454	37	76236	Spring Washer for 39454	69
76189	Covering Fixing Buckle for 39454	9	76218	Water Collect Cup for 39454	38	76237	Screw for 39454	70
76190	Screw for 39454	10	76219	Middle Handle Right Handle for 39454	39	76238	Ceramics Base for 39454	71
76191	Keep Warm Lamp Cover for 39454	11	76220	Screw for 39454	40	76239	Screw for 39454	72
76192	Cover Right Outer Plastic Handle for 39454	12	76221	Iron Middle Lever for 39454	41	76240	Spring Washer for 39454	73
76193	Cover Right Inside Plastic Handle for 39454	13	40577	Thermo-Limiter for 39454	42	76241	Screw for 39454	74
76194	Inside Cover Steamer Vent Silicone Ring for 39454	14	40580	Heating Element for 39454	43	76242	Electric Wire Fixer for 39454	75
76195	Nut for 39454	15	76224	Screw for 39454	44	76243	Electric Wire Fixing Base for 39454	76
76196	Spring Bracket for 39454	16	76225	Screw for 39454	45	76244	Bottom Cover for 39454	77
76197	Plastic Insider Cover for 39454	17	76226	Lamp Plate Fixing Board for 39454	46	76245	Spring Washer for 39454	78
76198	Screw for 39454	18	76227	Indication Lamp for 39454	47	76246	Cover Leg for 39454	79
76199	Cover Fixing Bracket for 39454	19	76228	Panel Sticker for 39454	48	76247	Screw for 39454	80
76200	Spring for 39454	20	40578	Switch Set for 39454	49	76248	Electric Wire for 39454	81
76201	Spring Board for 39454	21	76230	Panel for 39454	50	76249	Measuring Cup for 39454	82
76202	Screw for 39454	22	76231	Screw for 39454	51	76250	Rice Spoon for 39454	83
76203	Steamer Vent Sealing Ring for 39454	23	40578	Switch Set for 39454	52	76251	Top Cover Heating Wire for 39454	84
76204	Steamer Vent for 39454	24	76233	Screw for 39454	53	76252	Body Heating Wire for 39454	85
76205	Cover Sealing Ring for 39454	25	76234	Screw for 39454	54	40575	Thermostat for 39454	86
76206	Inside Aluminum Cover for 39454	26	64891	Micro Switch for 39454	55	14805	Gift Box for 39454	
76207	Nail for 39454	27	64892	Screw M3x14mm for 39454	56	14802	Gift Box for 39454	
76208	Rivet for 39454	28	64893	Screw M4x16mm for 39454	57	14806	Plastic Bag for 39454	
76209	Silicon Cup for 39454	29	64894	Body Fixing Sheet for 39454	58			

Electrical Schematics

Model CE-CN-0005 39454





Warranty Registration

Thank you for purchasing an Omcan product. To register your warranty for this product, complete the information below, tear off the card at the perforation and then send to the address specified below. You can also register online by visiting:

Merci d'avoir acheté un produit Omcan. Pour enregistrer votre garantie pour ce produit, complétez les informations ci-dessous, détachez la carte au niveau de la perforation, puis l'envoyer à l'adresse spécifiée ci-dessous. Vous pouvez également vous inscrire en ligne en visitant:

Gracias por comprar un producto Omcan usted. Para registrar su garantía para este producto, complete la información a continuación, cortar la tarjeta en la perforación y luego enviarlo a la dirección indicada a continuación. También puede registrarse en línea en:

<https://omcan.com/warranty-registration/>

For mailing in Canada

Pour postale au Canada

Por correo en Canadá

OMCAN

PRODUCT WARRANTY REGISTRATION

3115 Pepper Mill Court,

Mississauga, Ontario

Canada, L5L 4X5

For mailing in the US

Pour diffusion aux États-Unis

Por correo en los EE.UU.

OMCAN

PRODUCT WARRANTY REGISTRATION

4450 Witmer Industrial Estates, Unit 4,

Niagara Falls, New York

USA, 14305

or email to: service@omcan.com



Purchaser's Information

Name: _____

Address: _____

City: _____ Province or State: _____ Postal or Zip: _____

Country: _____

Dealer from which Purchased: _____

Dealer City: _____ Dealer Province or State: _____

Invoice: _____

Model Name: _____ Model Number: _____

Machine Description: _____

Date of Purchase (MM/DD/YYYY): _____

Would you like to extend the warranty? Yes No

Company Name: _____

Telephone: _____

Email Address: _____

Type of Company:

Restaurant Bakery Deli

Butcher Supermarket Caterer

Institution (specify): _____

Other (specify): _____

Serial Number: _____

Date of Installation (MM/DD/YYYY): _____

Thank you for choosing Omcan | Merci d'avoir choisi Omcan | Gracias por elegir Omcan



Since 1951 Omcan has grown to become a leading distributor of equipment and supplies to the North American food service industry. Our success over these many years can be attributed to our commitment to strengthen and develop new and existing relationships with our valued customers and manufacturers. Today with partners in North America, Europe, Asia and South America, we continually work to improve and grow the company. We strive to offer customers exceptional value through our qualified local sales and service representatives who provide convenient access to over 6,500 globally sourced products.

Depuis 1951 Omcan a grandi pour devenir un des “leaders” de la distribution des équipements et matériel pour l’industrie des services alimentaires en Amérique du Nord. Notre succès au cours de ces nombreuses années peut être attribué à notre engagement à renforcer et à développer de nouvelles et existantes relations avec nos clients et les fabricants de valeur. Aujourd’hui avec des partenaires en Amérique du Nord, Europe, Asie et Amérique du Sud, nous travaillons continuellement à améliorer et développer l’entreprise. Nous nous efforçons d’offrir à nos clients une valeur exceptionnelle grâce à nos ventes locales qualifiées et des représentants de service qui offrent un accès facile à plus de 6500 produits provenant du monde entier.

Desde 1951 Omcan ha crecido hasta convertirse en un líder en la distribución de equipos y suministros de alimentos en América del Norte industria de servicios. Nuestro éxito en estos años se puede atribuir a nuestro compromiso de fortalecer y desarrollar nuevas relaciones existentes con nuestros valiosos clientes y fabricantes. Hoy con socios de América del Norte, Europa, Asia y América del Sur, que trabajan continuamente para mejorar y crecer la empresa. Nos esforzamos por ofrecer a nuestros clientes valor excepcional a través de nuestro local de ventas y representantes de los servicios que proporcionan un fácil acceso a más de 6,500 productos con origen a nivel mundial.

